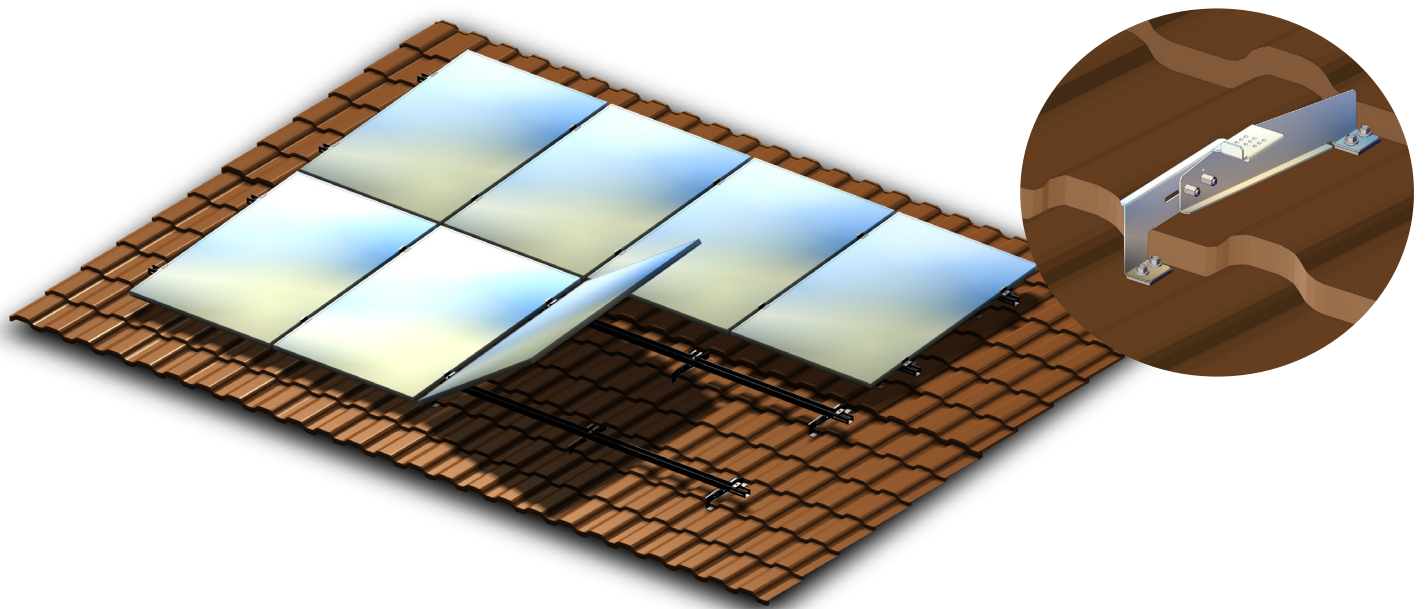


SOLARCLICK

by **FINELCOMP**[®]

MOUNTING SYSTEM THAT REVOLUTIONISES THE INSTALLATION OF SOLAR PANELS



**OPTIMISED
INSTALLATION**

For all roof types.



**ONE SCREW SIZE
ONE TOOL**

Easy installation.



**READY TO INSTALL
BRACKETS**

No loose parts.

25 year warranty



SOLARCLICK SOLAR PANEL MOUNTING SYSTEM

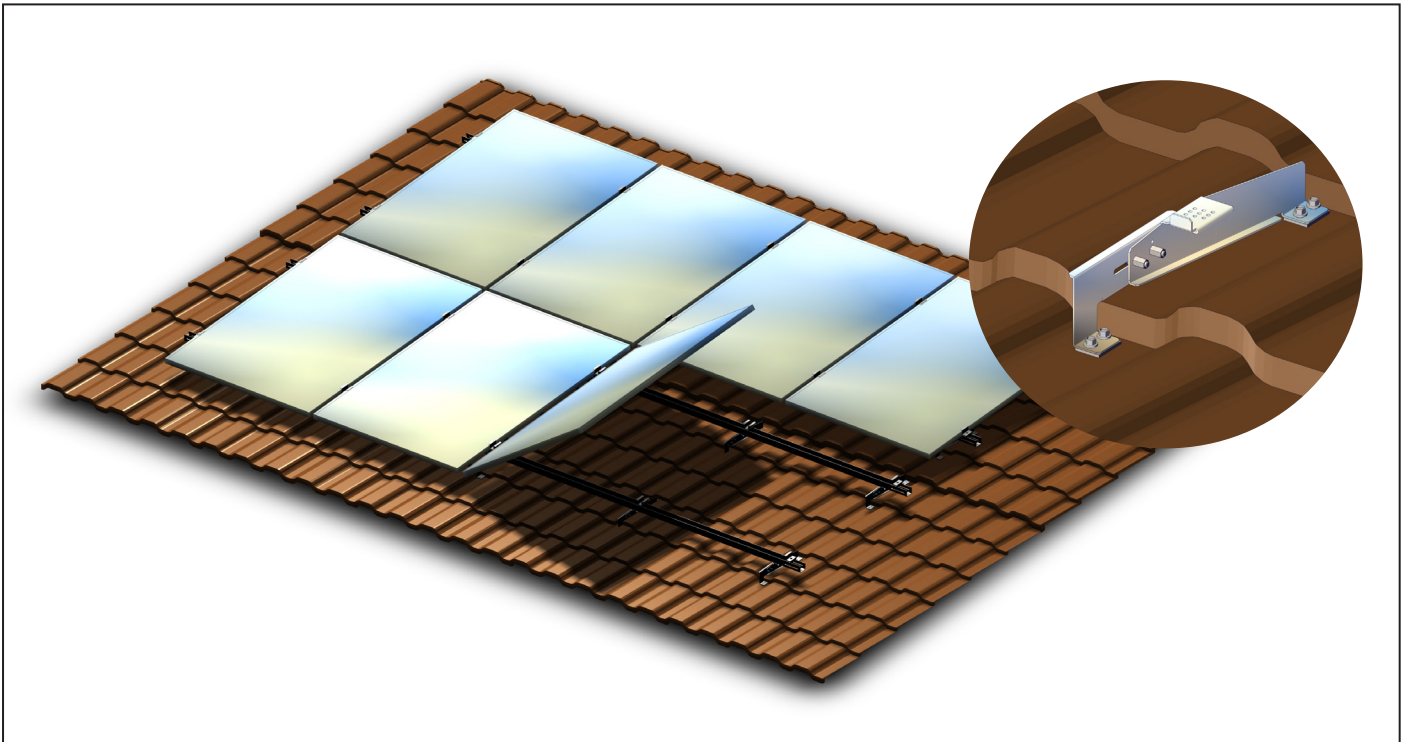
Preliminary information	3
Installation Overview	4
Panel orientation	4
Panel overhang instruction	4
Roof mounting bracket installation	5
General	5
Profiled sheet metal roofs and felt roofs	5
Standing seam roofs (mechanical seam and lock seam)	5
Tile-patterned sheet metal roofs	5
Tiled roofs	5
Rail installation	6
Installing the solar panel	7
Parts list	8
Technical data	10
Installation of the tile roof bracket	11
Terms of warranty	12

MANUFACTURER:

Finelcomp Oy, Yrittäjänkatu 6, 83500 Outokumpu, Finland

www.finelcomp.fi

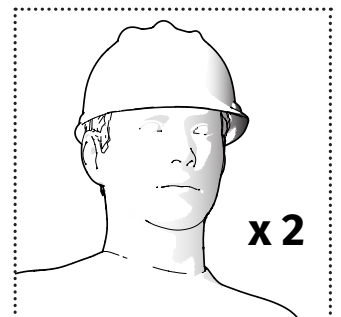
Preliminary information



**80% of the roofs in Finland are profiled steel sheet roofs.
SolarClick speeds up installation work by 30%.**

Installation accessories

All you need to assemble the SolarClick mounting system is a 10 mm socket wrench and a screwdriver. Only one type of screw is used when assembling the system. The installation should be performed by two people.

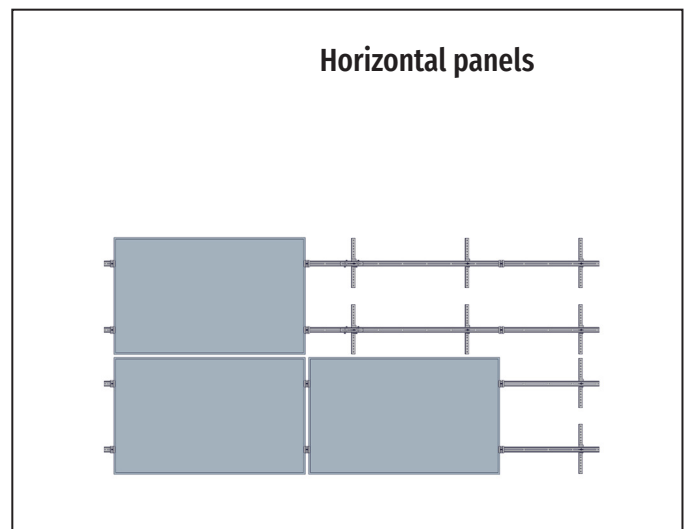
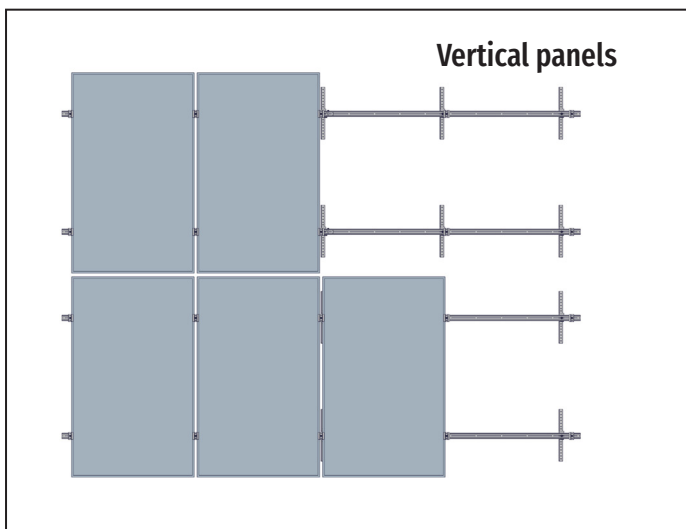


Please follow the local health and safety laws/regulations as well as safe work practices. Please use the necessary safety equipment.

Installation overview

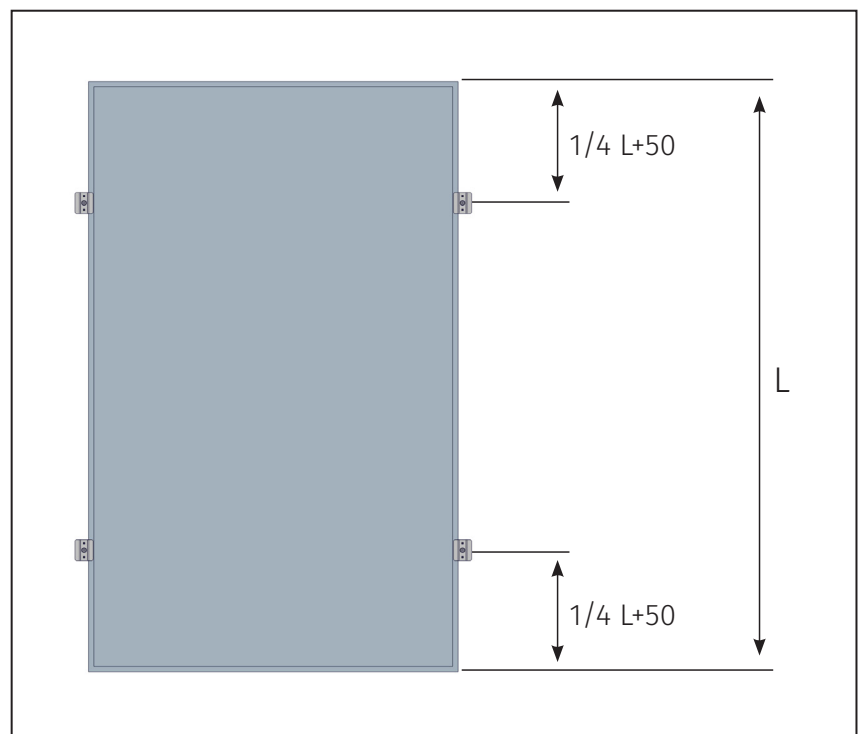
Orientation of the mounting system

The mounting system is installed horizontally on the roof as shown in the image.



Panel overhang instructions

Please follow the panel manufacturer's instructions regarding panel overhang. A common manufacturers' rule is that the maximum panel overhang in the installation is $\frac{1}{4}$ of the panel length + 50 mm, but it is always a good idea to check the overhang instructions on a case-by-case basis.

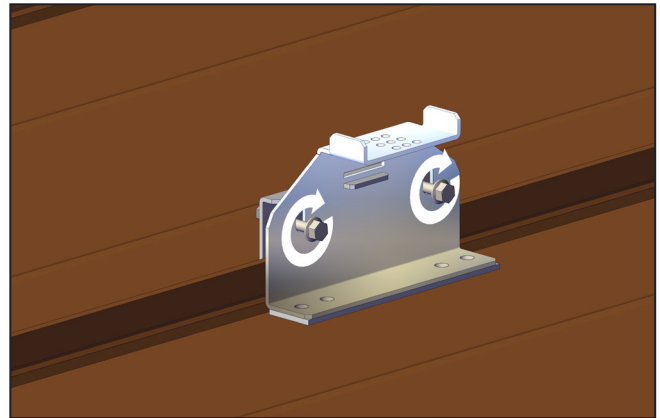
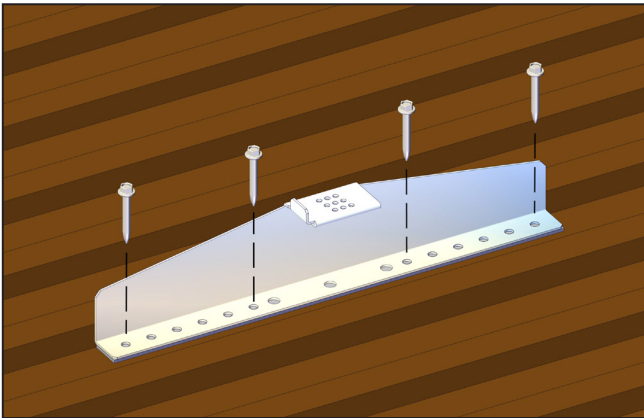


Roof mounting bracket installation

General

- For the vertical spacing between the brackets, always follow the panel manufacturer's instructions.
- Fix the brackets to the roof base as shown in the images below. For fixing the brackets, use separately sold HVAC screws, see the table on page 9.
- Check the condition of the roof base and ensure proper fastening and tightness of the screw connection.

Note! Make sure that the brackets are installed in the same direction and in line with each other.

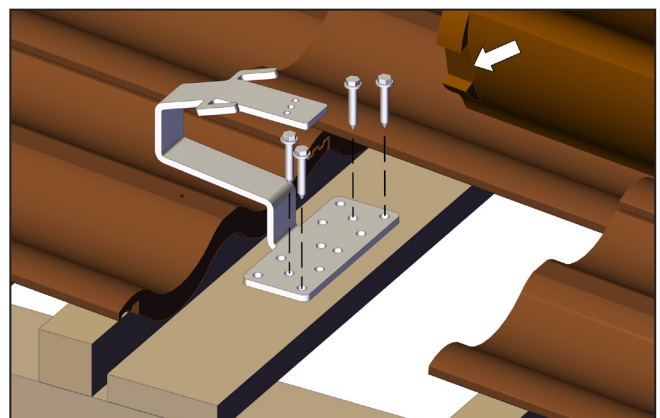
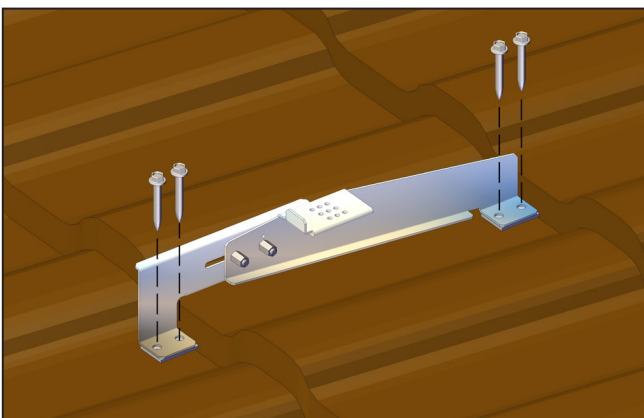


Profiled sheet metal roofs and felt roofs

The bracket is sealed against the roof by its joint sealing strip. For a felt roof, use additional sealant between the bracket and roof. The horizontal distance between the fasteners must be ≤ 1200 mm.

Standing seam roofs (mechanical seam and lock seam)

In the case of a seamed sheet metal roof, tighten the bracket to the roof seam ($8 \leq Nm$) or, alternatively, fasten the bracket to the roof panel in the same way as for a profiled sheet metal or felt roof. The horizontal distance between the fasteners must be ≤ 1200 mm.



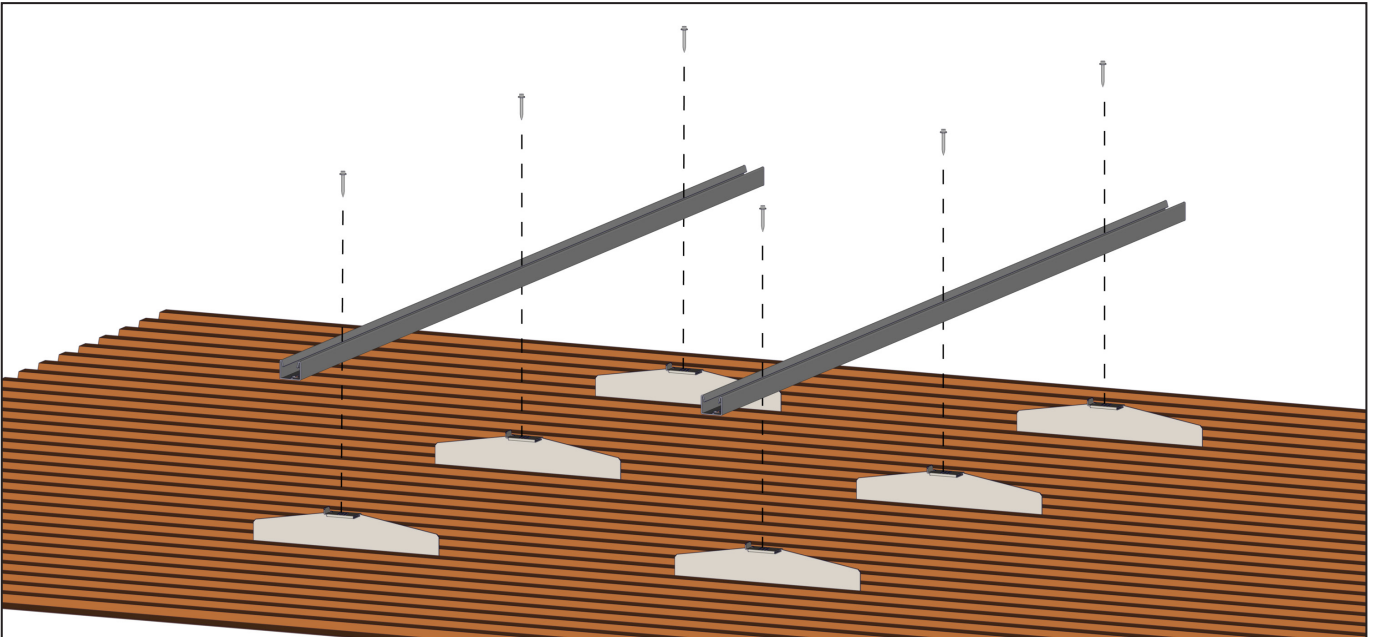
Tile-patterned sheet metal roofs

For a tile-patterned sheet metal roof, press the length-adjustable bracket against the notch in the tile profile and screw the roof bracket to the roof base under the sheet metal. The horizontal distance between the fasteners must be ≤ 1200 mm.

Tiled roofs

In a tiled roof structure, the bracket is installed on a board/plywood with a thickness of at least 25 mm. The horizontal distance between the fasteners must be ≤ 1050 mm. See more detailed instructions on page 11. Install the bracket as close as possible to the rafter.

Rail installation

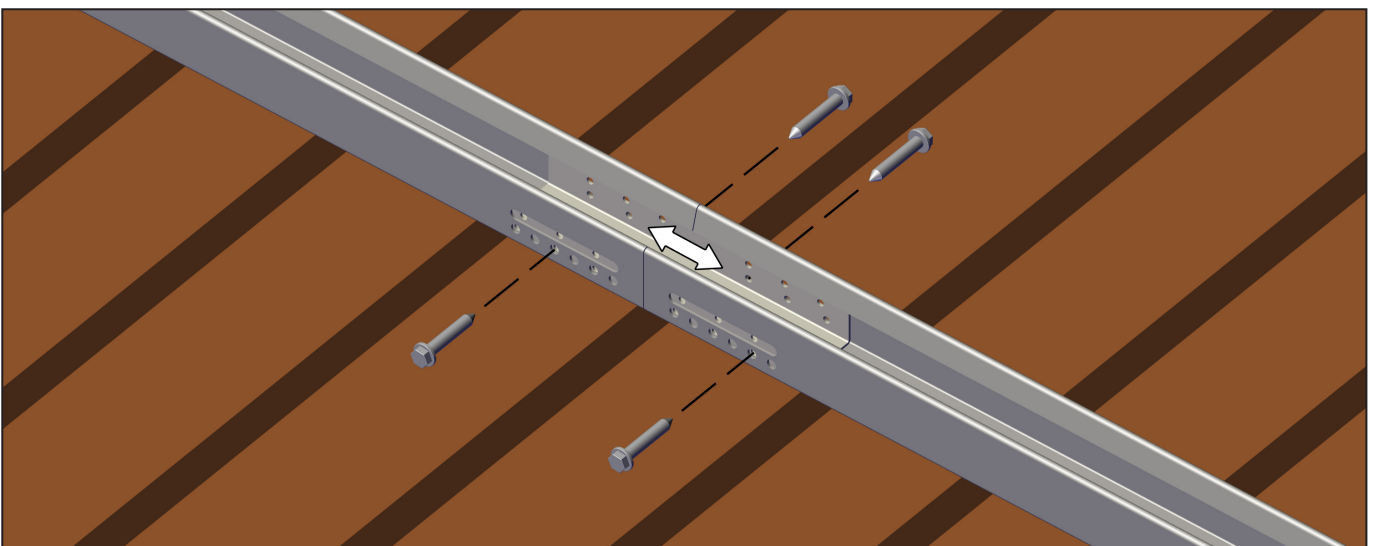


General

- Rail length: 2,200 mm and 3,280 mm
- Extension length: 200 mm
- Screw: see table on page 9.
 - Note! Screw used in the connection between the tile roof bracket and the mounting rail: thread-forming Taptite M6
- Screw tightening moment: $8 \leq Nm$
- You can install two to three solar panels on one pair of rails
- Non-sparking cutting method
- Grounding of the system, see page 10

Installation

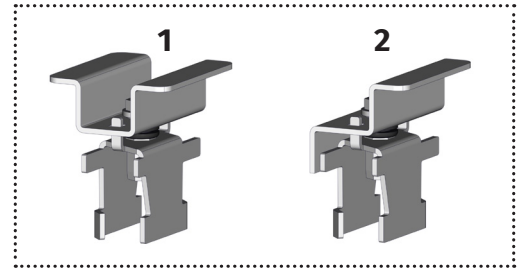
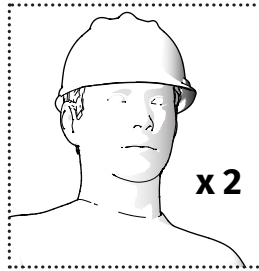
Fit the rails into the roof mounting bracket supports. The rails stay on the supports, and you can adjust their positions as required before screwing. The connection of several rails is carried out using an extension piece as shown in the image below. If a panel fastener and the extension piece are in the same position, you can adjust the position of the extension piece in the ovals on the rail, if necessary.



Installing the solar panel

General

- The solar panel installation should be performed by two people.
- There are two types of panel fasteners: intermediate fasteners (1) and end fasteners (2).



Installation

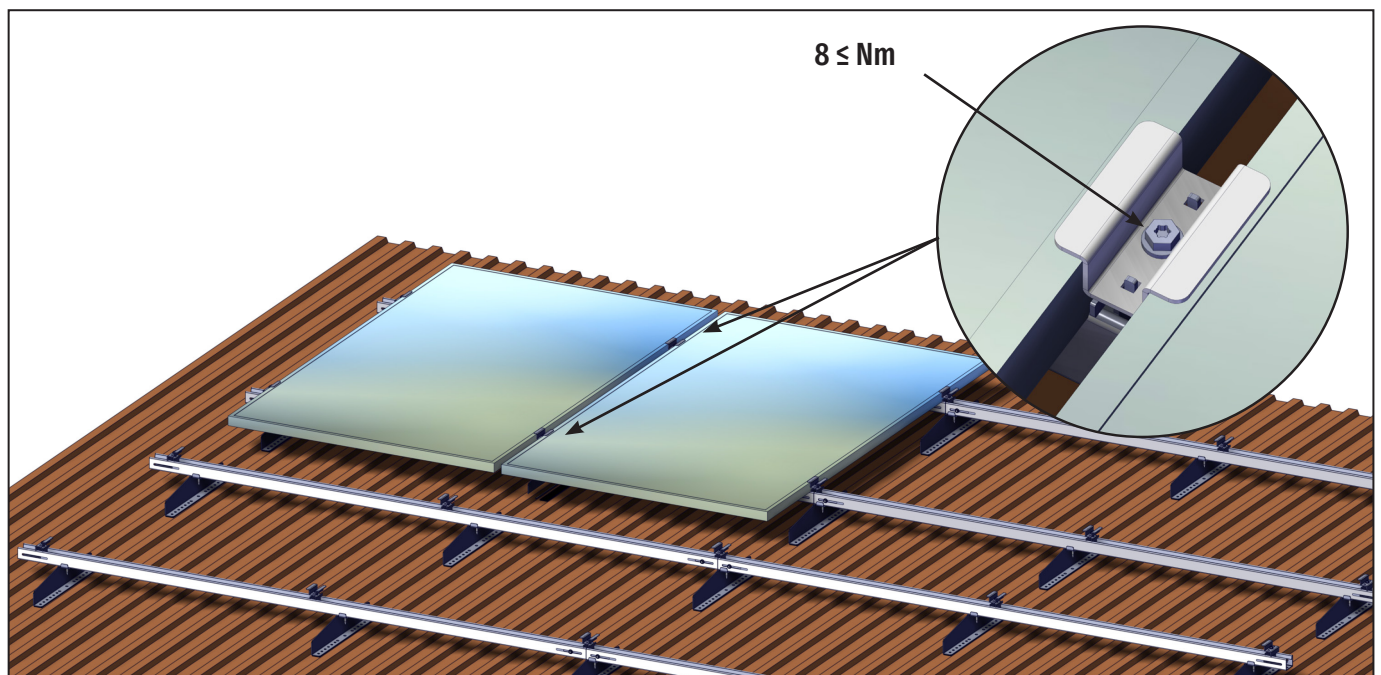
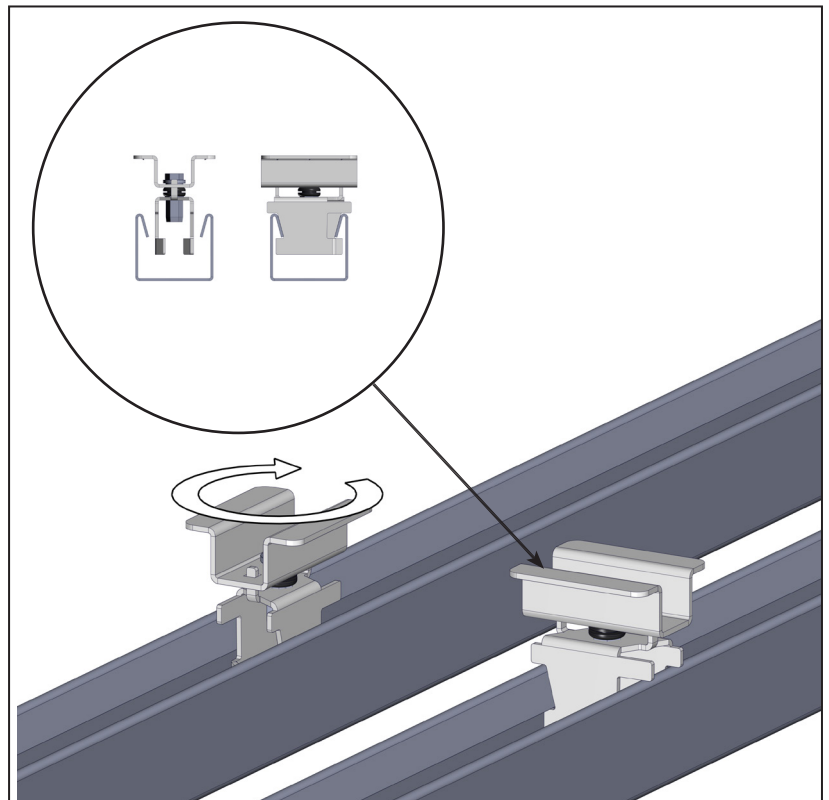
1. Fit the fasteners to the rail and turn 90° (see the image).

Note! You can adjust the panel fasteners' position on the rail until you lock them.

2. Set the solar panel in place with the edges under fasteners.

Note! Support the solar panel until the fasteners are locked.

3. Lock the panel fasteners in place by tightening the dedicated screw in the fastener (screw tightening torque: $8 \leq \text{Nm}$).



Parts list

Mounting rails

Item number	Name	Electrical number
40220010	SolarC mounting rail 2200	8013504
40220011	SolarC mounting rail 3280	8013505
40220013	SolarC mounting rail 2440	8013516
40220012	SolarC extension piece	8013506

Roof mounting brackets

Item number	Name	Electrical number
40220001	SolarC universal bracket 440	8013500
40220002	SolarC seam roof bracket 150	8013501
40220003	SolarC profiled sheet metal roof bracket	8013502
40220006	SolarC tiled roof bracket	8013536
40220005	SolarC universal bracket 600	8013515

Panel fasteners

Item number	Name	Electrical number
40220022	SolarC intermediate fastener 35K	8013518
40220023	SolarC end fastener 35K	8013519
40220032	SolarC intermediate fastener 30K	8013520
40220033	SolarC end fastener 30K	8013521

Accessories

Item number	Name	Electrical number
9999030566961,200	HVAC screw 7x40, 200	8013510
11K3055416-200	HVAC screw 6.5x30+seal, 200	8013517
10520001527	Cellular rubber strip EPDM 3x30, 25m roll	8013509
	Cable clamp	For example: 1370870
	Taptite M6	For example: Würth

Technical data

Materials data

- Magnelis ZM310
- Coating thickness 25 µm
- Coating type zinc, aluminium 3.5%, magnesium 3%

Standards

According to IEC 61730, where the snow load specified for the panels is 5,400Pa = 540 kg/m² and the wind load is 2,400Pa = 408 kg/panel.

Profiled sheet metal roof bracket

- Level differences 15-18-24-25-30 (Poimukate+Ruukki+Wecmann+Metehä+Teräs Tapio)
- Pattern length 330-350-370-400 (Poimukate+Ruukki+Wecmann+Metehä+Teräs Tapio)
- Default adjustment 350 mm

Tile roof bracket

- Ormax and Ormax Protector, manufactured 2001-2024, The bottom marking of the tile is ORMAX ORMAX or MONIER.
- Ormax Protector Nova 2024-

Thermal expansion

Thermal expansion should be taken into account during the installation. Install a maximum of 10 m of continuous rail, followed by a minimum break of 2 cm.

Grounding

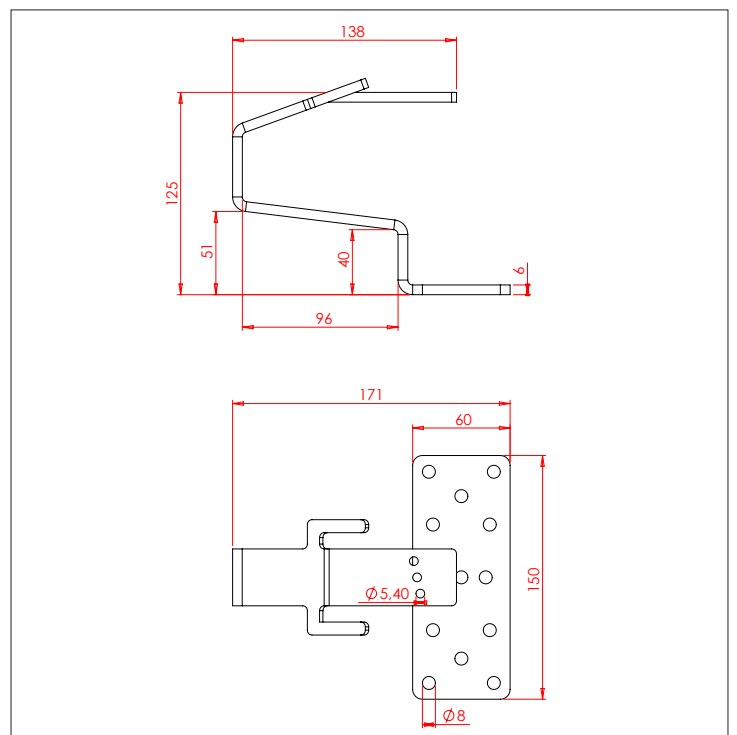
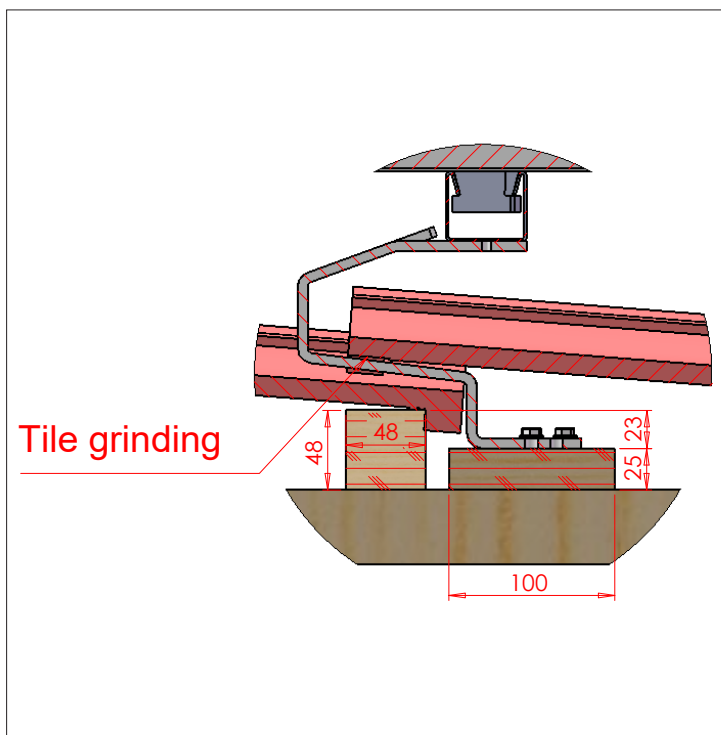
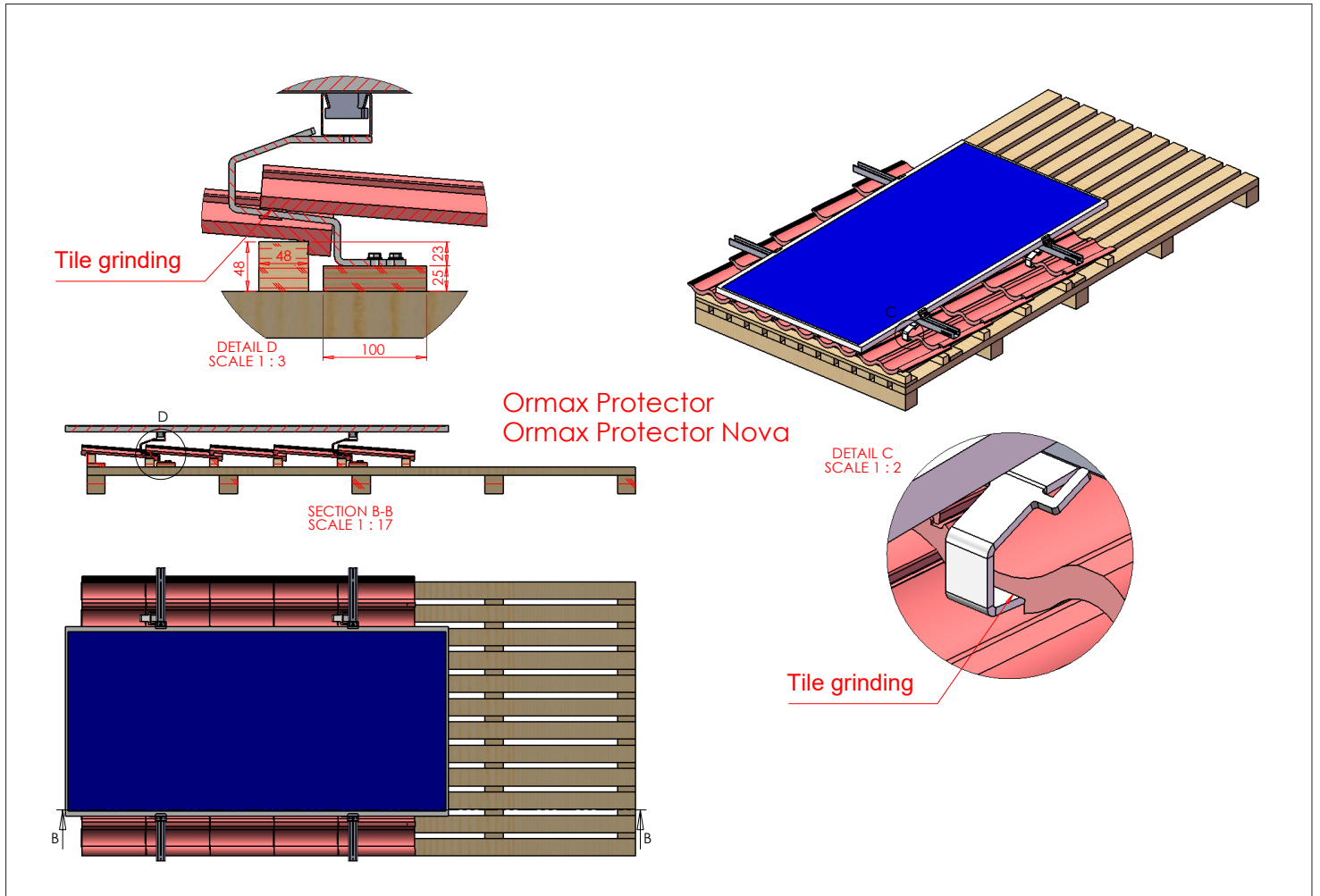
The panels are grounded to the rails by the fasteners.
Ensure proper grounding of the entire structure/system at the destination.

Links

- <https://www.finelcomp.fi/en/products/solarclick/>



Installation of tile roof bracket



Terms of warranty

Finelcomp SolarClick terms of warranty as of 4 May 2023

The SolarClick product warranty complements Finelcomp's general terms and conditions of sale and is valid for 25 years from the date of purchase. Finelcomp guarantees that the SolarClick products meet the requirements for normal use of the product and that the products will not rust through during the warranty period. The warranty does not cover normal aesthetic changes due to ageing.

The warranty is valid when:

- The product has been installed according to the Finelcomp SolarClick product installation instructions.
- Any scrap metal generated during the installation has been removed immediately upon installation.
- The product does not come into contact with metals that are more precious than the product or with liquids passing through more precious metals.
- The claim is submitted within one (1) month of detecting the damage.
- The claimant can prove that the system was installed in accordance with the supplier's installation instructions and cleaning was carried out properly after the installation.

The warranty is void if:

- The operating environment is particularly aggressive or corrosive, such as in proximity to a chemical factory or in a particularly saline or humid climate.
- The product has been exposed to corrosive foreign bodies outside the normal climate load (moderate salinity, moderate humidity, water, tree leaves).
- Other manufacturers' components have been used in the installation of the system.

Compensation and reimbursement handling

If the claim was submitted in accordance with the terms of warranty, Finelcomp Oy undertakes to provide the buyer with new replacement products from the existing product range within 60 days, provided that the purchase document is presented.

If a reimbursement is paid for the product, its value shall not exceed the product's original invoiced value.

Finelcomp Oy shall not be liable for any business expenses, special expenses, costs arising from loss of income or other indirect costs.

SOLARCLICK

SOLARCLICK
by **FINELCOMP**[®]